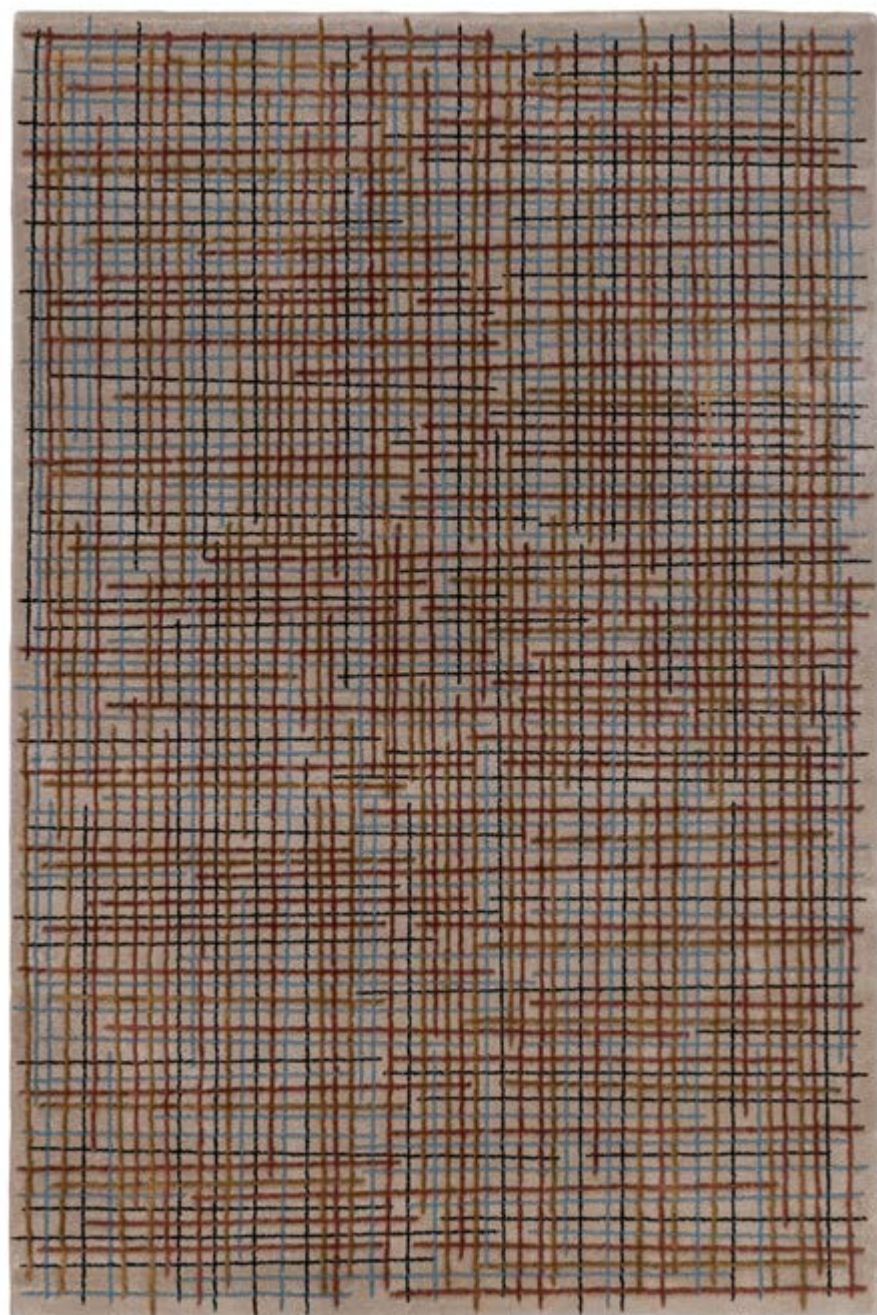


TECNICAL INFORMATION

BLISSFUL



PRODUCT TYPE
Tufted

TECHNIQUE
Cut & Loop Relief

PILE HEIGHT
14mm, 15mm, 18mm

MATERIALS
Bamboo, Botanical Silk and Wool

SIZE
2x3m

USE
Hospitality, Residential

RECOMMENDED SIZES
1,7X2,4 | 2X3 | 2,5X3,5 | 3X4 | 2Ø | 2,5Ø | 3Ø

PRICE BAND
3

COLOURS
solid

TIPO DE PRODUTO
Tufted

TÉCNICA
Cut & Loop Relief

ALTURA DO PÊLO
14mm, 15mm, 18mm

MATERIAIS
Bambu, Botanical Silk e Lã

TAMANHO
2x3m

UTILIZAÇÃO
Hotelaria, Residencial

TAMANHOS RECOMENDADOS
1,7X2,4 | 2X3 | 2,5X3,5 | 3X4 | 2Ø | 2,5Ø | 3Ø

FAIXA DE PREÇO
3

CORES
sólido

COLOR COMBINATIONS COMBINAÇÃO DE CORES

Please note that changing color combinations will result in creating a custom rug design.

For assistance, please consult with our sales associate.

Pedimos atenção para a alteração das combinações de cores que resultará na criação de um design de tapete personalizado. Para obter assistência, consulte o nosso vendedor.



Blissful BRICK
V51, T40, T39, TT156, W216



Blissful COFFEE
V50, T94, T28, TT61, W202



Blissful CREAM
V5, T24, T60, TT87, NW103



Blissful GRAPHITE
V45, T77, T28, TT64, NW111



Blissful GREYISH
V47, T123, T58, TT154, W615



Blissful JADEITE
V39, T123, T73, TT61, NW108



Blissful KHAKI
V35, T79, T94, TT73, NW103



Blissful OLD GOLD
V9, T50, T63, TT4, NW110



Blissful PEWTER
V5, T27, T58, TT167, NW105



Blissful WHITE
V52, T25, T26, TT61, NW104



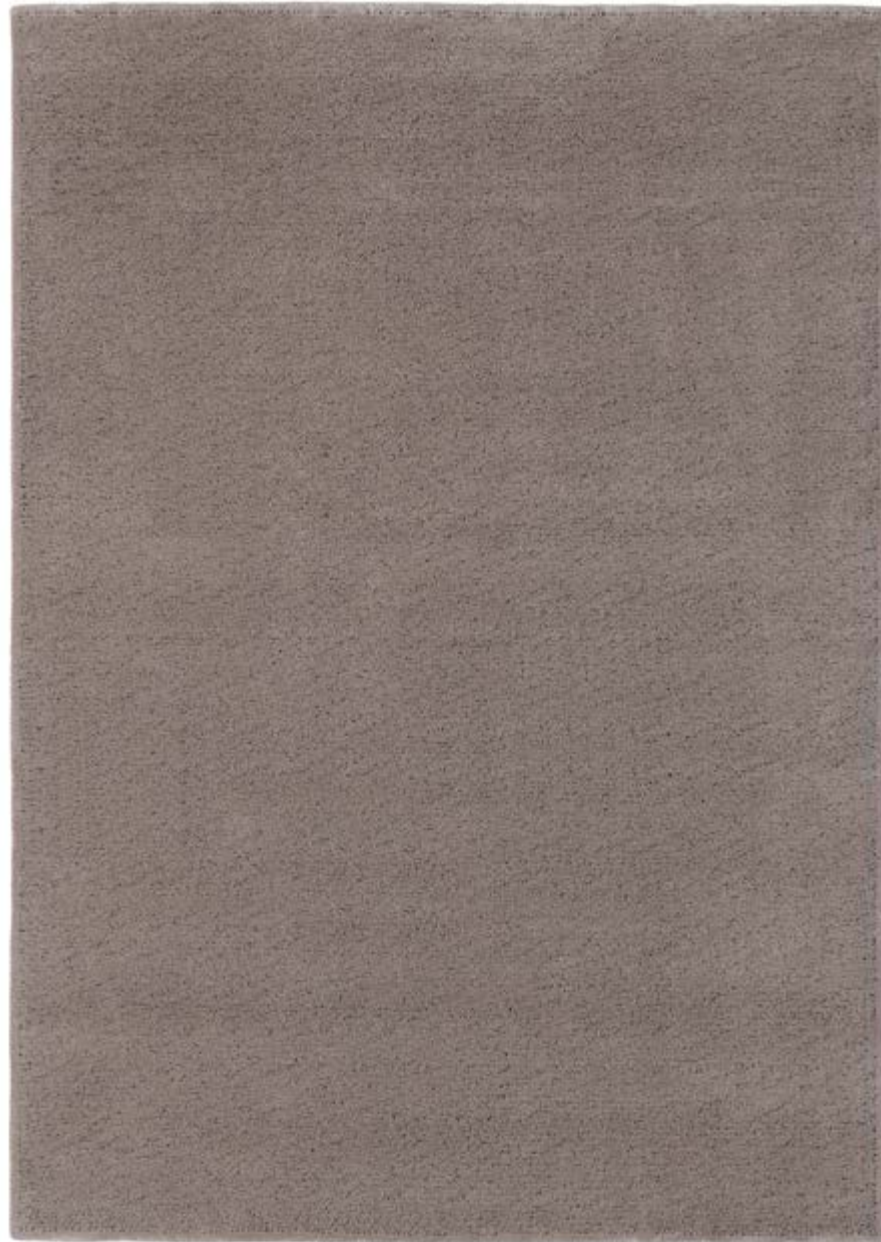
Blissful ROSE TEA
V30, T3, T62, TT28, NW111



Blissful TOAST
V63, T122, T3, TT156, W663

TECNICAL INFORMATION

DIRTY ICE



PRODUCT TYPE
Tufted

TECHNIQUE
Cut & Loop Relief

PILE HEIGHT
9MM, 11MM

MATERIALS
Botanical Silk and Wool

SIZE
2x3m

USE
Hospitality, Residential

RECOMMENDED SIZES
1,7X2,4 | 2X3 | 2,5X3,5 | 3X4 | 2Ø | 2,5Ø | 3Ø

PRICE BAND
3

COLOURS
solid

TIPO DE PRODUTO
Tufted

TÉCNICA
Cut & Loop Relief

ALTURA DO PÊLO
14mm, 15mm, 18mm

MATERIAIS
Botanical Silk e Lã

TAMANHO
2x3m

UTILIZAÇÃO
Hotelaria, Residencial

TAMANHOS RECOMENDADOS
1,7X2,4 | 2X3 | 2,5X3,5 | 3X4 | 2Ø | 2,5Ø | 3Ø

FAIXA DE PREÇO
3

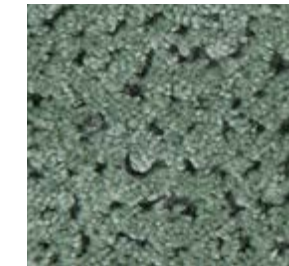
CORES
sólido

COLOR COMBINATIONS COMBINAÇÃO DE CORES

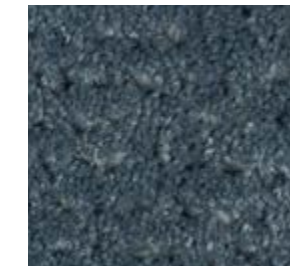
Please note that changing color combinations will result in creating a custom rug design.

For assistance, please consult with our sales associate.

Pedimos atenção para a alteração das combinações de cores que resultará na criação de um design de tapete personalizado. Para obter assistência, consulte o nosso vendedor.



Dirty Ice AQUA
T73, NW105



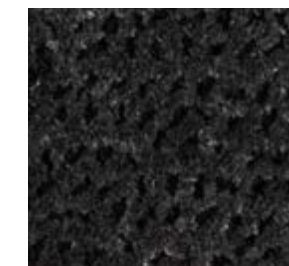
Dirty Ice ARTIC
T109, W765



Dirty Ice BEIGE
T50, W210



Dirty Ice CAROB
T65, W216



Dirty Ice CHARCOAL
T77, W615



Dirty Ice FLAMINGO
T130, W663



Dirty Ice FOGGY
T24, W615



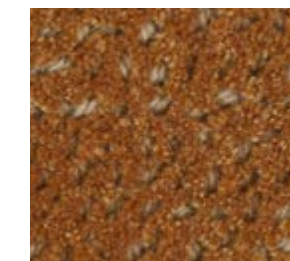
Dirty Ice FOX
T42, NW110



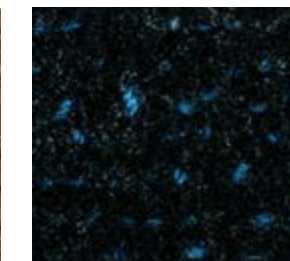
Dirty Ice GLACIER
T58, NW106



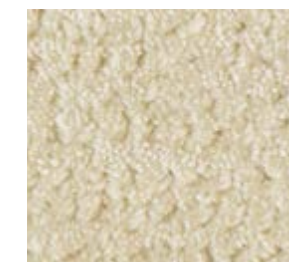
Dirty Ice GOLD
T111, W202



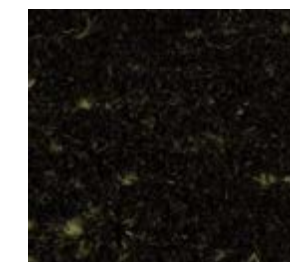
Dirty Ice LION
T62, W509



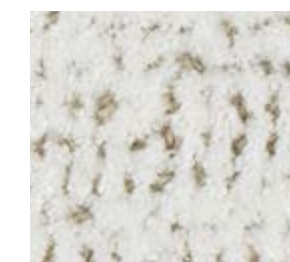
Dirty Ice OCEAN
T38, W609



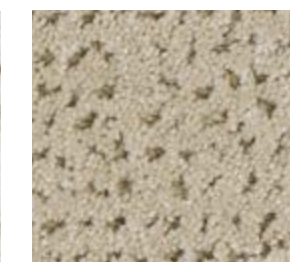
Dirty Ice PEARL
T25, NW100



Dirty Ice PINE
T127, W222



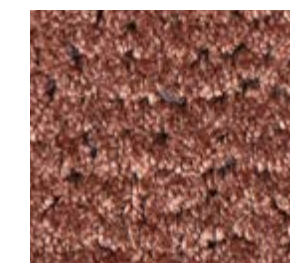
Dirty Ice POLAR
T1, NW104



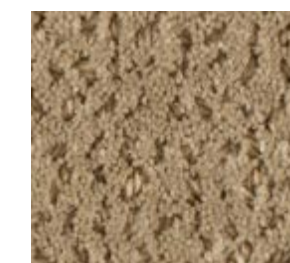
Dirty Ice RICE
T61, W552



Dirty Ice ROSE GOLD
T63, W214



Dirty Ice RUST
T126, W506



Dirty Ice TAN
T123, W509

TECNICAL INFORMATION
FLAKE



PRODUCT TYPE
Tufted

TECHNIQUE
Cut & Loop Relief

PILE HEIGHT
9mm, 12mm

MATERIALS
Botanical Silk and Contract Botanical Silk

SIZE
2x3m

USE
Hospitality, Residential

RECOMMENDED SIZES
1,7X2,4 | 2X3 | 2,5X3,5 | 3X4 | 2Ø | 2,5Ø | 3Ø

PRICE BAND
1

COLOURS
Mix

TIPO DE PRODUTO
Tufted

TÉCNICA
Cut & Loop Relief

ALTURA DO PÊLO
9mm, 12mm

MATERIAIS
Botanical Silk e Contract Botanical Silk

TAMANHO
2x3m

TAMANHOS RECOMENDADOS
1,7X2,4 | 2X3 | 2,5X3,5 | 3X4 | 2Ø | 2,5Ø | 3Ø

FAIXA DE PREÇO
1

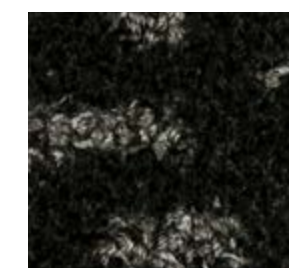
CORES
sólido

COLOR COMBINATIONS COMBINAÇÃO DE CORES

Please note that changing color combinations will result in creating a custom rug design.

For assistance, please consult with our sales associate.

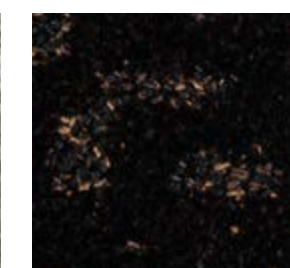
Pedimos atenção para a alteração das combinações de cores que resultará na criação de um design de tapete personalizado. Para obter assistência, consulte o nosso vendedor.



Flake ANTHRACITE
T28, T30, TT77



Flake ARGENT
T118, T26, TT26



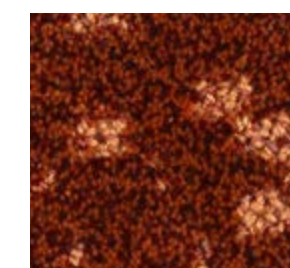
Flake CACOA
T7, T9, TT28



Flake CARAMEL
T3, T108, TT150



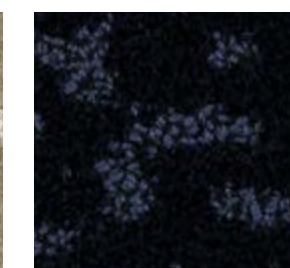
Flake CLAY
T3, T126, TT156



Flake COOPER
T12, T39, TT156



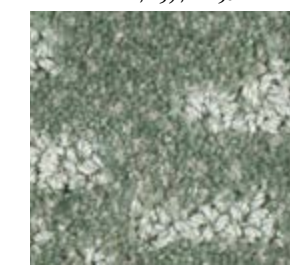
Flake DOVE
T123, T27, TT166



Flake MIDNIGHT BLUE
T38, T28, TT158



Flake MILK
T78, T61, TT167



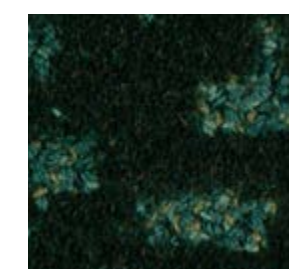
Flake MINT
T26, T73, TT73



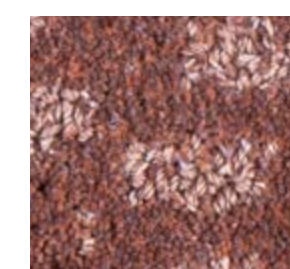
Flake NUDE
T50, T122, TT50



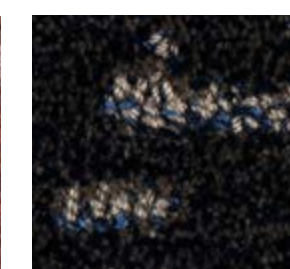
Flake PALOMA
T27, T60, TT59



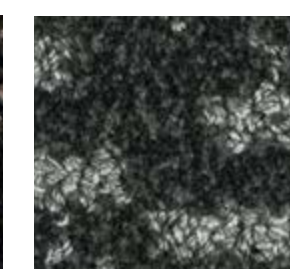
Flake PEACOCK
T121, T81, TT37



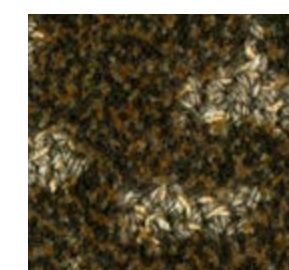
Flake ROSY
T74, T130, TT157



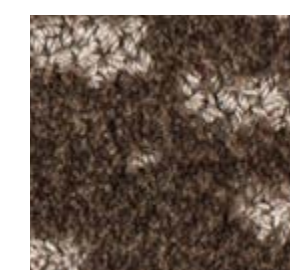
Flake SCARAB
T69, T33, TT17



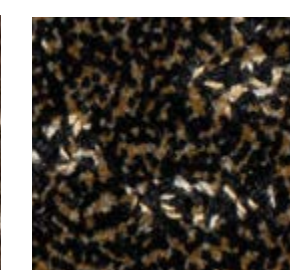
Flake STEEL
T125, T57, TT29



Flake SWAMP
T76, T63, TT17

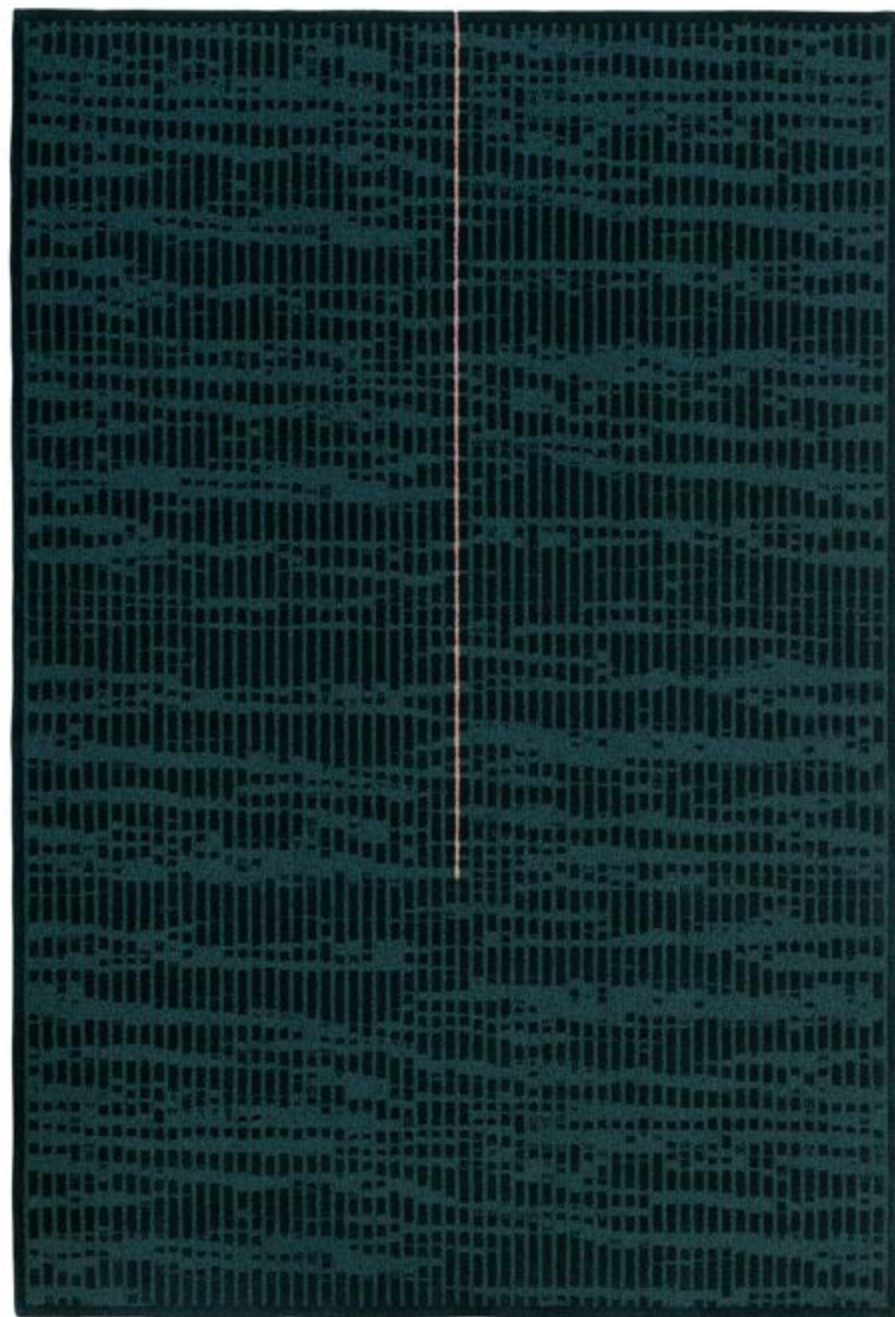


Flake TAUPE
T65, T124, TT161



Flake TIGRESS
T76, T63, TT28

TECNICAL INFORMATION
RAVINE



PRODUCT TYPE
 Tufted

TECHNIQUE
 Cut & Loop Relief

PILE HEIGHT
 9mm, 10mm

MATERIALS
 Botanical Silk, Finest Wool and Wool

SIZE
 2x3m

USE
 Hospitality, Residential

RECOMMENDED SIZES
 1,7X2,4 | 2X3 | 2,5X3,5 | 3X4 | 2Ø | 2,5Ø | 3Ø

PRICE BAND
 2

COLOURS
 Mix

TIPO DE PRODUTO
 Tufted

TÉCNICA
 Cut & Loop Relief

ALTURA DO PÊLO
 9mm, 10mm

MATERIAIS
 Botanical Silk, Finest Wool e Lã

TAMANHO
 2x3m

TAMANHOS RECOMENDADOS
 1,7X2,4 | 2X3 | 2,5X3,5 | 3X4 | 2Ø | 2,5Ø | 3Ø

FAIXA DE PREÇO
 2

CORES
 Mix

COLOR COMBINATIONS COMBINAÇÃO DE CORES

Please note that changing color combinations will result in creating a custom rug design.

For assistance, please consult with our sales associate.

Pedimos atenção para a alteração das combinações de cores que resultará na criação de um design de tapete personalizado. Para obter assistência, consulte o nosso vendedor.



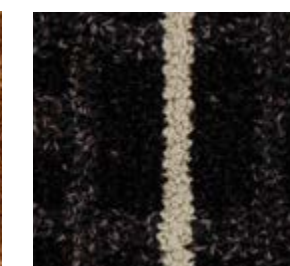
Ravine ALMOND
 TW536, TW502, T2, W536, T108



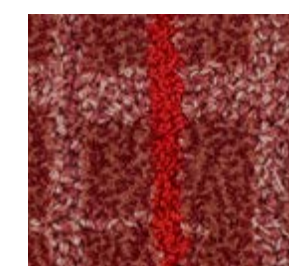
Ravine AMBER
 TW508, TW820, T63, NW108, T79



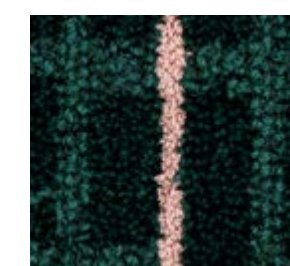
Ravine BRONZE
 TW539, TW538, T62, W521, T113



Ravine COAL
 TW525, TW722, T9, W615, T24



Ravine CORAL
 TW711, TW545, T130, W659, T20



Ravine DARKSEA
 TW555, TW319, T37, W727, T130



Ravine JADESHEEN
 TW332, TW734, T73, W221, T113



Ravine MARBLE
 TW578, TW502, T24, W735, T28



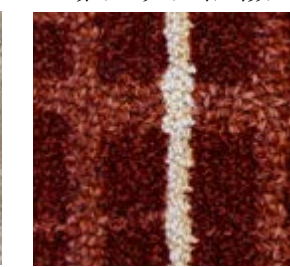
Ravine MOSS
 TW557, TW723, T76, W209, T12



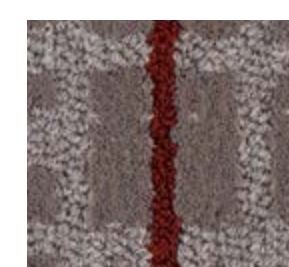
Ravine OAT
 TW578, TW750, T124, W204, T62



Ravine OYSTER
 TW303, TW434, T27, NW104, T97



Ravine REDWOOD
 TW545, TW661, T39, W663, T24



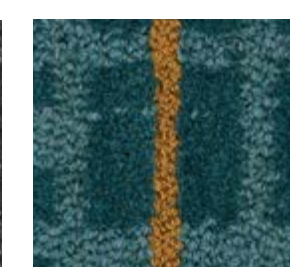
Ravine SMOKE
 TW767, TW706, T27, W206, T39



Ravine SNOW
 TW535, TW502, T78, NW100, T65



Ravine STONE
 TW747, TW435, T57, NW105, T63



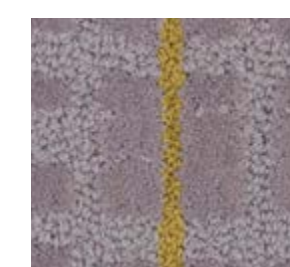
Ravine TEAL
 TW478, TW805, T112, W617, T6



Ravine TOAST
 TW505, TW504, T3, W509, T9



Ravine UMBER
 TW302, TW930, T125, NW110, T40



Ravine VIOLET ICE
 TW601, TW691, T13, W209, T19

TECNICAL INFORMATION
SENTOSA KUSU



PRODUCT TYPE
Tufted

TECHNIQUE
Cut & Loop Relief

PILE HEIGHT
8mm, 10mm

MATERIALS
Botanical Silk and Wool

SIZE
2x3m

USE
Hospitality, Residential

RECOMMENDED SIZES
1,7X2,4 | 2X3 | 2,5X3,5 | 3X4 | 2Ø | 2,5Ø | 3Ø

PRICE BAND
1

COLOURS
solid

TIPO DE PRODUTO
Tufted

TÉCNICA
Cut & Loop Relief

ALTURA DO PÊLO
8mm, 10mm

MATERIAIS
Botanical Silk e Lã

TAMANHO
2x3m

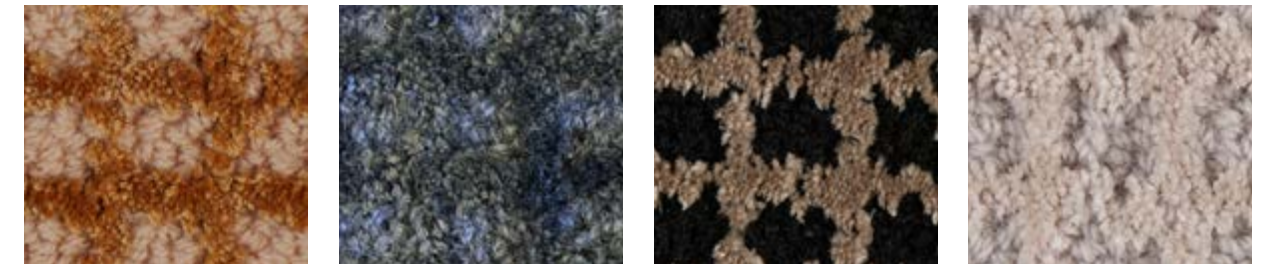
UTILIZAÇÃO
Hotelaria, Residencial

TAMANHOS RECOMENDADOS
1,7X2,4 | 2X3 | 2,5X3,5 | 3X4 | 2Ø | 2,5Ø | 3Ø

FAIXA DE PREÇO
1

CORES
sólido

COLOR COMBINATIONS COMBINAÇÃO DE CORES
Please note that changing color combinations will result in creating a custom rug design.
For assistance, please consult with our sales associate.
Pedimos atenção para a alteração das combinações de cores que resultará na criação de um design de tapete personalizado. Para obter assistência, consulte o nosso vendedor.

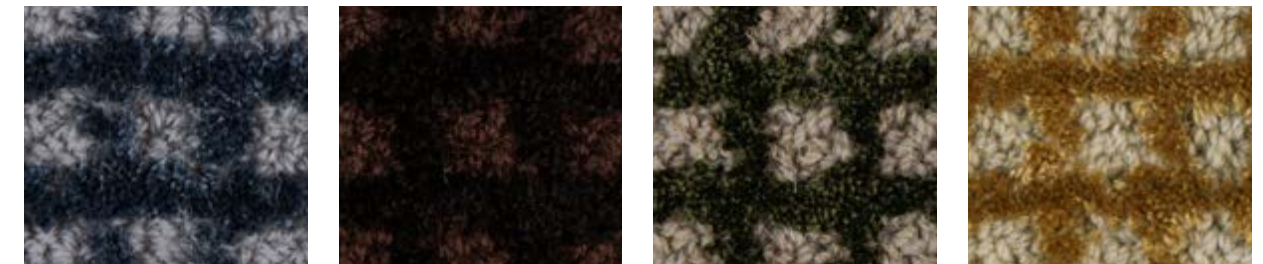


Sentosa Kusu APRICOT
W212 , T62

Sentosa Kusu CARBON
NW105 , T83

Sentosa Kusu CAVIAR
W615 , T124

Sentosa Kusu CLOUDY
W765 , T72

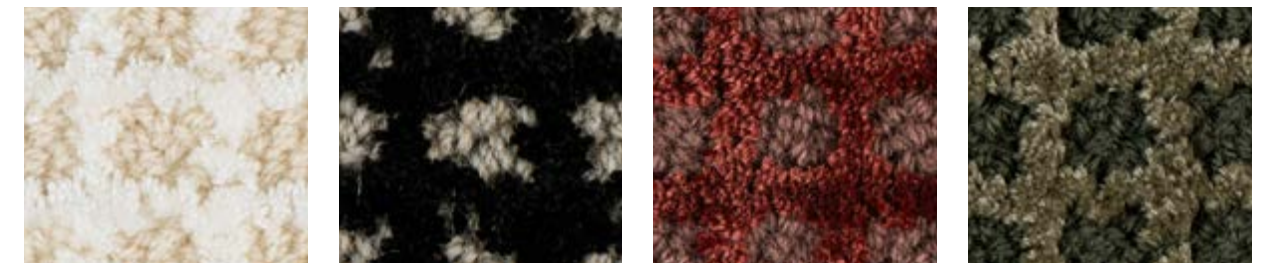


Sentosa Kusu DENIM
W549 , T31

Sentosa Kusu EXPRESSO
W216 , T28

Sentosa Kusu FOREST
NW108 , T121

Sentosa Kusu GOLDEN
NW106 , T63



Sentosa Kusu IVORY
W210 , T1

Sentosa Kusu NOIR
NW106 , T28

Sentosa Kusu OPERA
W719 , T39

Sentosa Kusu SAGE
W238 , T94

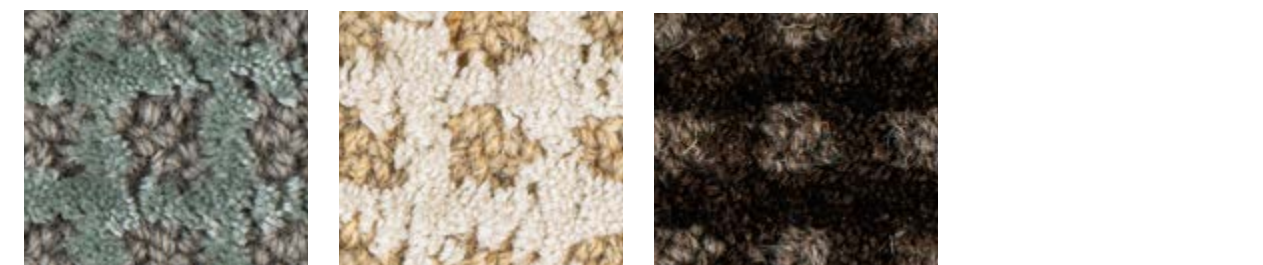


Sentosa Kusu SALT
NW100 , T123

Sentosa Kusu SAND
W536 , T24

Sentosa Kusu SIENNA
W663 , T126

Sentosa Kusu SILVER
NW111 , T58



Sentosa Kusu SPA
W207 , T73

Sentosa Kusu TAN
NW103 , T61

Sentosa Kusu WENGE
NW109 , T9